



A Walk in the Park

Designing the Park

In 2015 – three public meetings were held in Pacific City regarding the park design

At the November 2015 Board Meeting, the completed site plan from HHPR was approved by the Board

It has been displayed at the Oregon Coast Bank, South Tillamook Library and at the Oar House.

Now is the opportunity to take a look at that plan in more detail



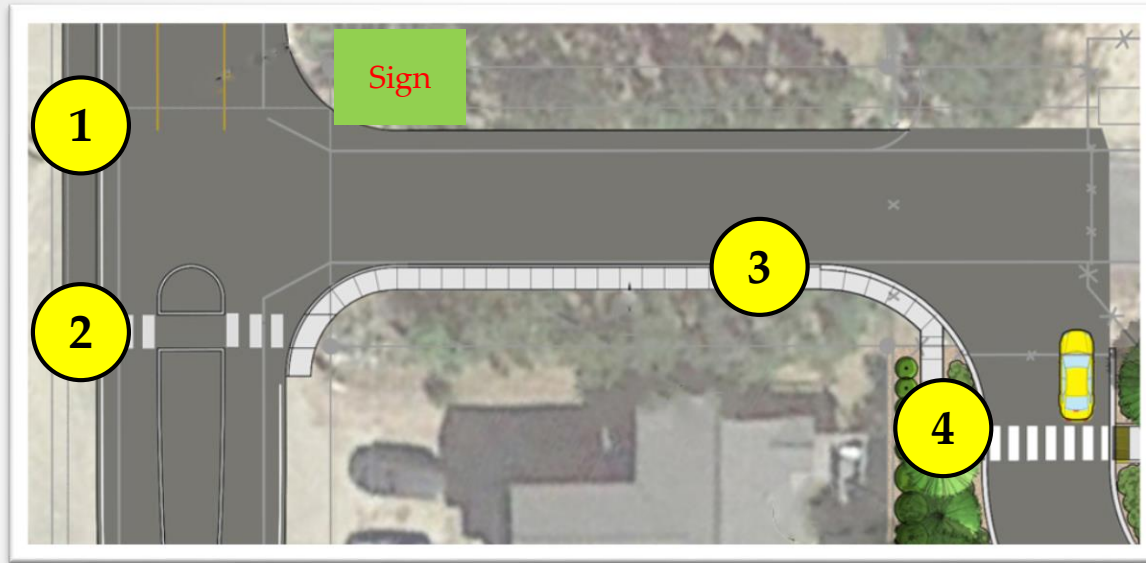
Concept Plan Pacific City Community Park



Keep an eye out for these features

- Picnic Areas
- Barbeque Pits
- Amphitheater
- Volley ball court
- Bocce ball court
- Skate & bike Area
- Trail head to BLM hiking trails
- A children's playground
- Radio controlled gate
- Adult exercise area
- Paved walking areas
- Historical/cultural display wall
- Sand dune plant demonstration garden
- Restrooms
- Waste & recycle receptacles
- Bike racks
- Future interpretive center
- Landscaped buffer areas
- Swales for water drainage

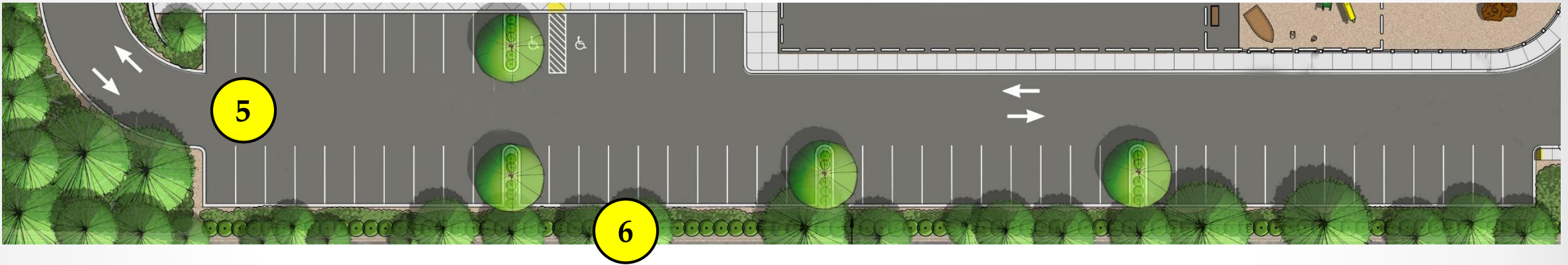
The Entry to the Park



Note: There will be signage directing folks where to turn into the park

1. Entrance off of Cape Kiwanda Drive
 - Share drive with TLW
 - Improvements - Public Works/Cape Kiwanda Master Plan
2. Cross Walk
3. 4 ft wide sidewalk
4. Entry –Radio Controlled Gate
 - Open dawn-dusk when in operation
 - Fire Department/Sheriff ability to enter at will

Parking Lot / Shrub Buffer



5. A 60 space parking lot is planned

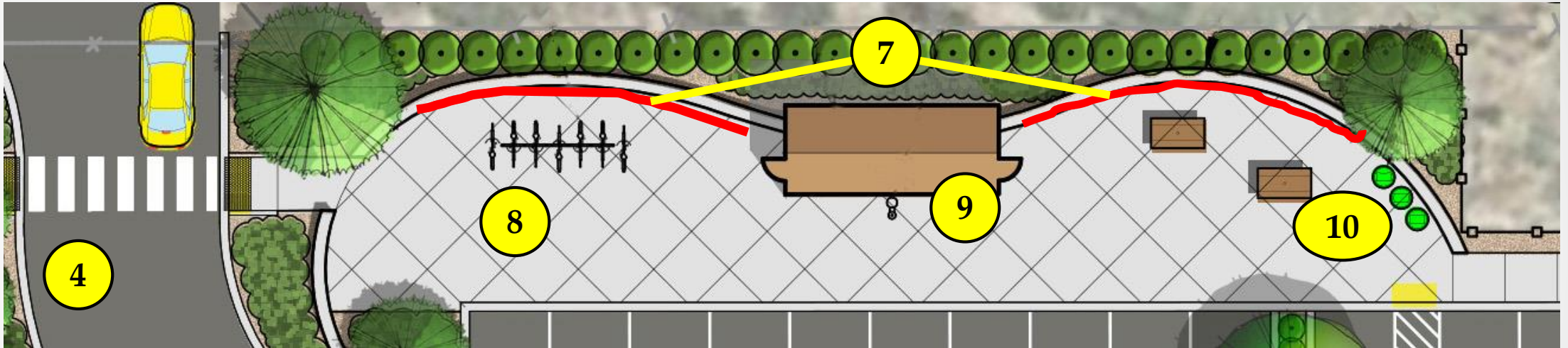
- Handicap parking will be available
- At least 6 spaces will be reserved for the BLM Trailhead

6. 10 foot wide Vegetative Buffer

- Between park and neighbors
- Include evergreen shrubs at least 4 ft tall.
- Privacy for neighbors – noise abatement

Focus of 2016 TLT GRANT

History / Culture / Education



Landscaped cement patio area that will hold a number of amenities.

7. History / Culture / Education Wall

- Will be used to display area historical, cultural or educational information in the area. Dory/Fishing History, Native American, Marine Sciences

8. Bike Racks

9. Rest Rooms & Drinking Fountain

10. Trash Cans & Recycling

Open Area / Future Building Site



11. Foot Print for Future Interpretive Center Site

- Building for science/history/arts/culture
- Approximately 5,000 sf – two story.
- Privacy for neighbors – noise abatement

12. Cement Sidewalk for easy access 4-6 ft wide or more

13. Permeable Asphalt Area

- Open area for multiple uses
 - Farmer's market
 - Local Arts / Craft Fairs
 - Art Shows
 - Open for community use

14. Park Benches

Children Playground Area

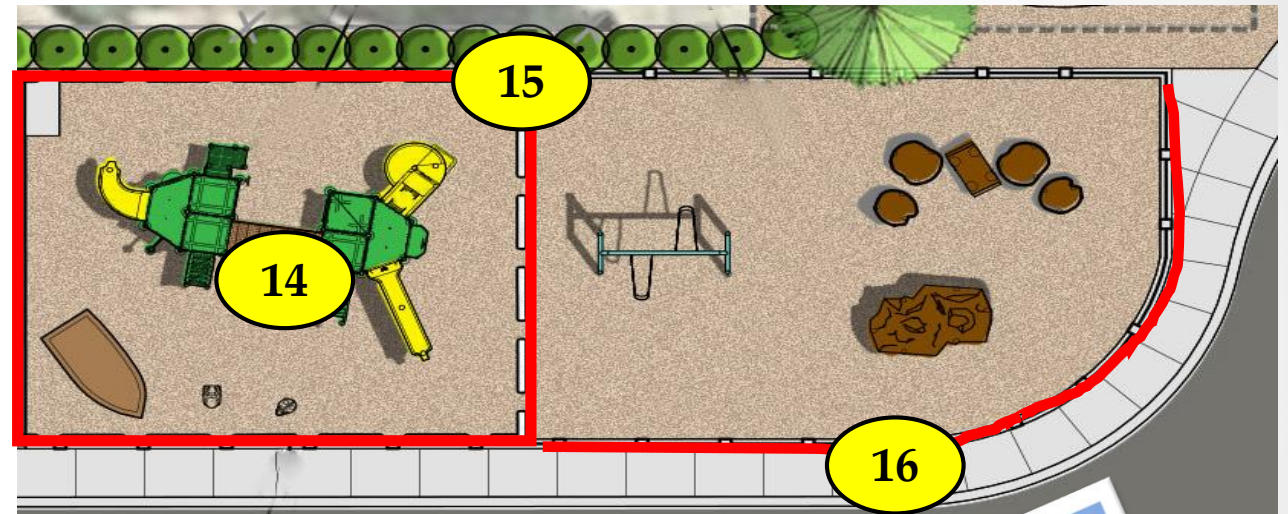
Just East of the asphalt area

14. Playground Area

Mixture of traditional, nature themed play and dory boat play areas

15. Foot print of cover for a portion of the play area

16. 4 ft fence surrounding the area



Note the sidewalk continues past the playground



Turnaround

Just East of the playground area

17. Pick-up or drop off turnaround

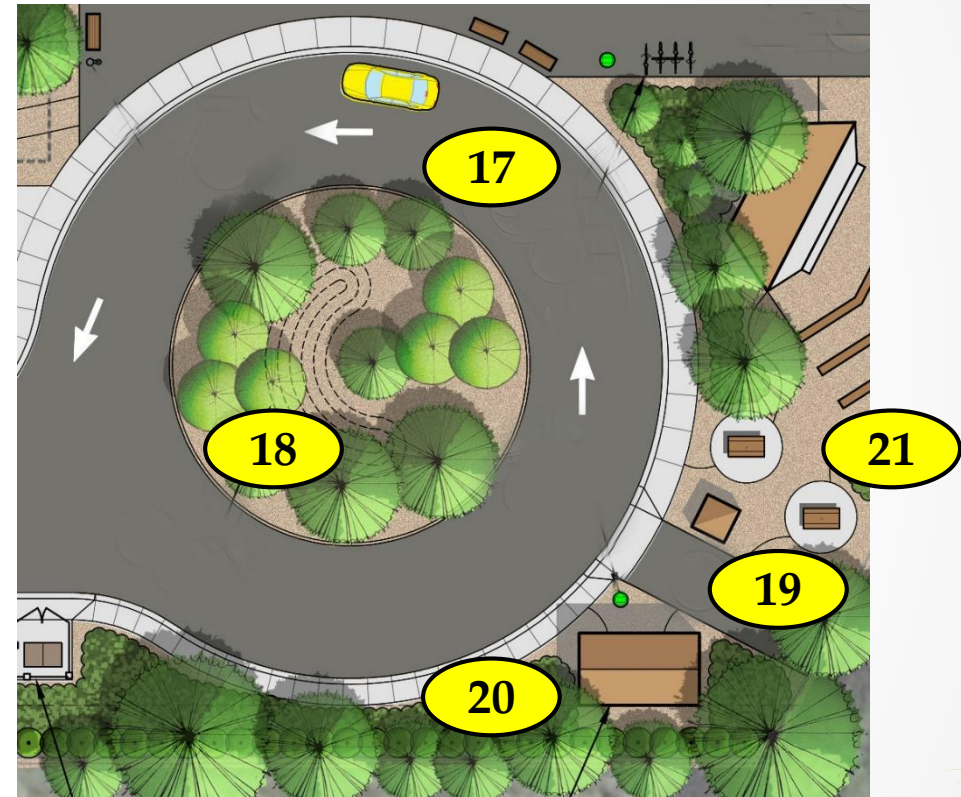
- easy access for emergency vehicles
- better traffic flow for parking lot
- convenient access to picnic and other areas

18. Storm water treatment swale

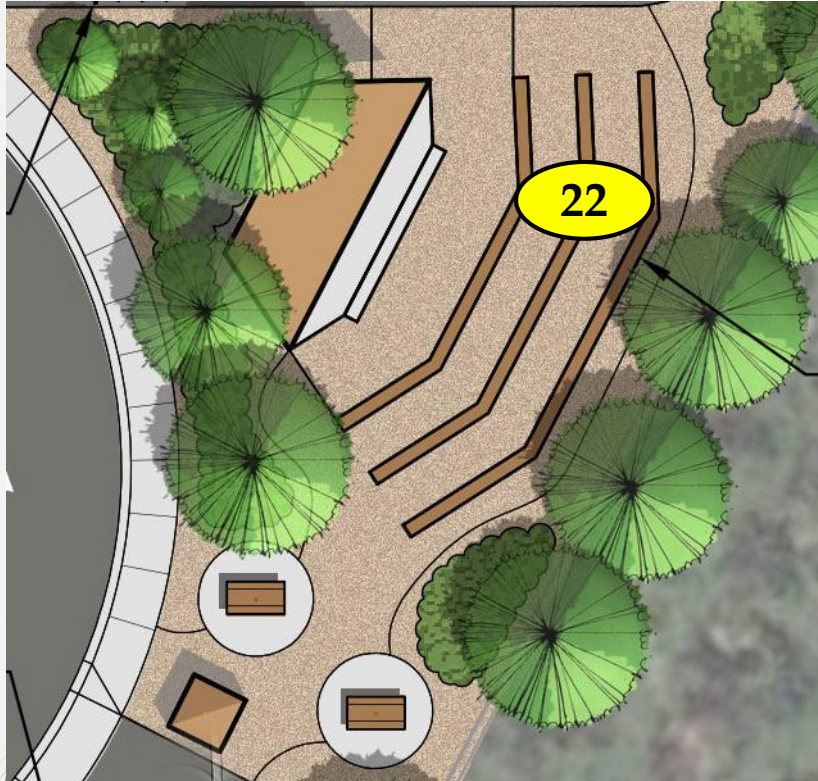
19. BLM Trail access and kiosk

20. Storage Shed

21. Picnic areas

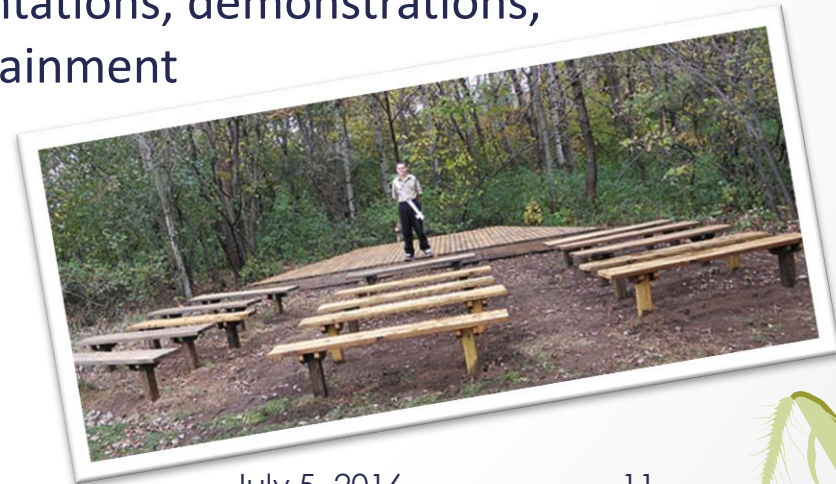


Amphitheater



22. Amphitheater

- Small seats about 50 people
- Wood benches/stage
- Similar to state parks
- Open to community use
- Community use for presentations, demonstrations, entertainment



Paved Paths / Adult Exercise

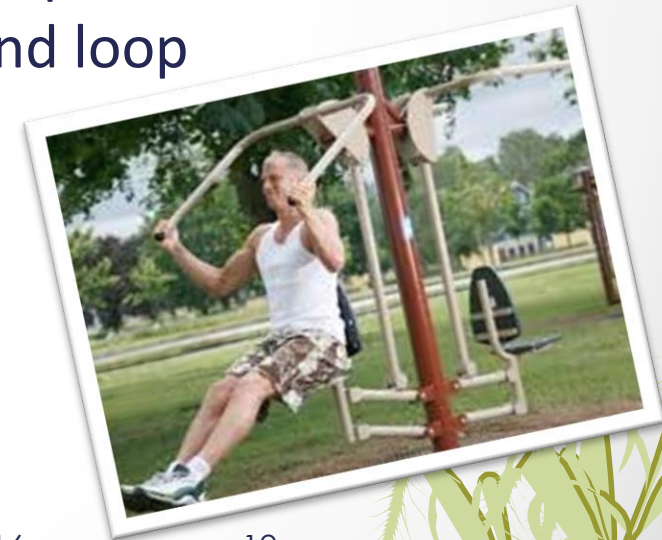


23. Asphalt Loop Trail

- Access to center of park – easy walking

24. Adult outdoor exercise area

25. More picnic areas scattered around loop



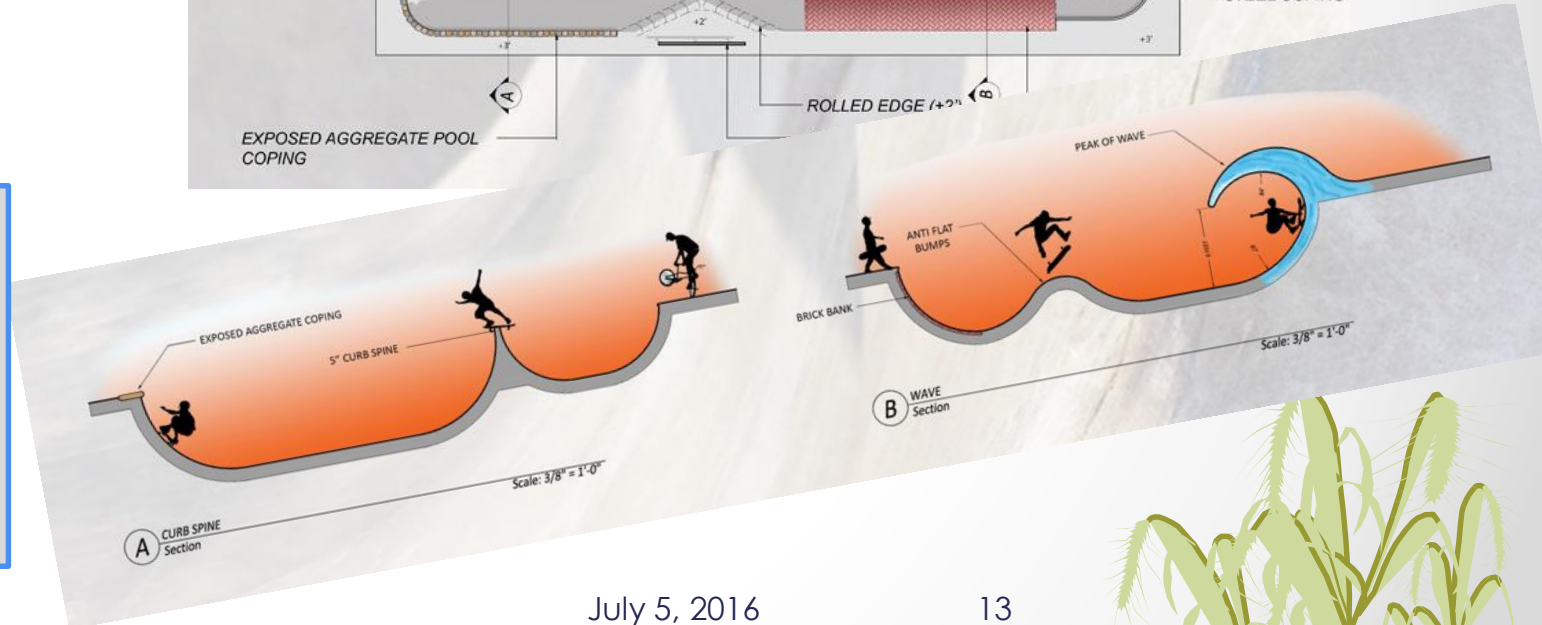
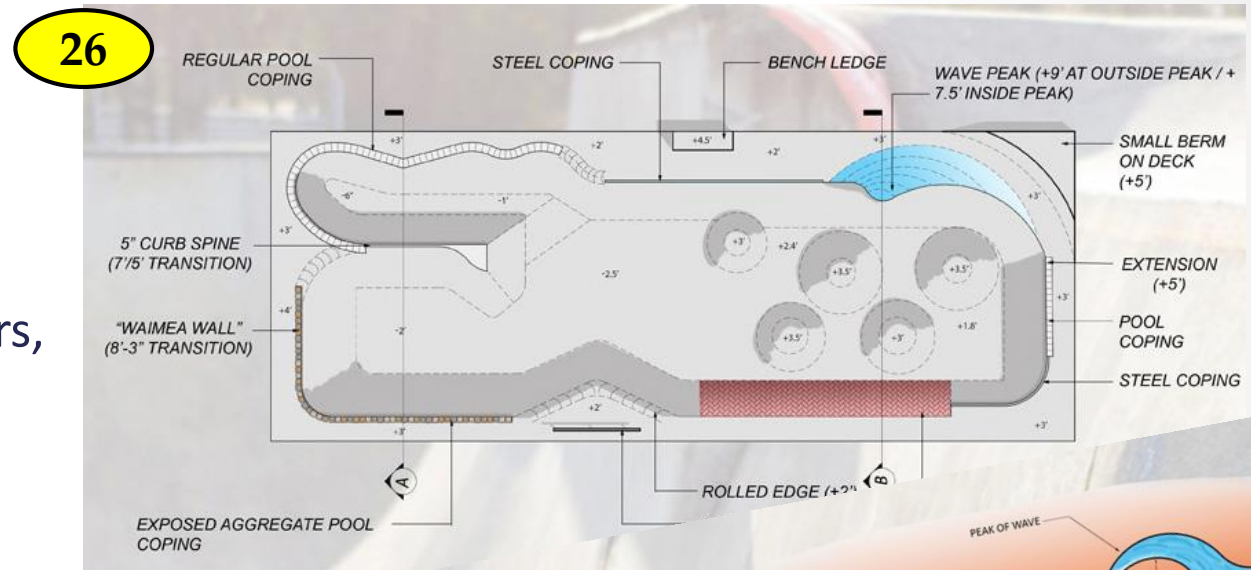
Skate / Bike Area

26. Skate & Bike area

- About 6,500 sf – original intent
- Safety will determine final size
- Uses - skate boards, bikes, razor scooters, roller blades
- Similar to park in Cannon Beach

Security / Safety / Noise are primary concerns

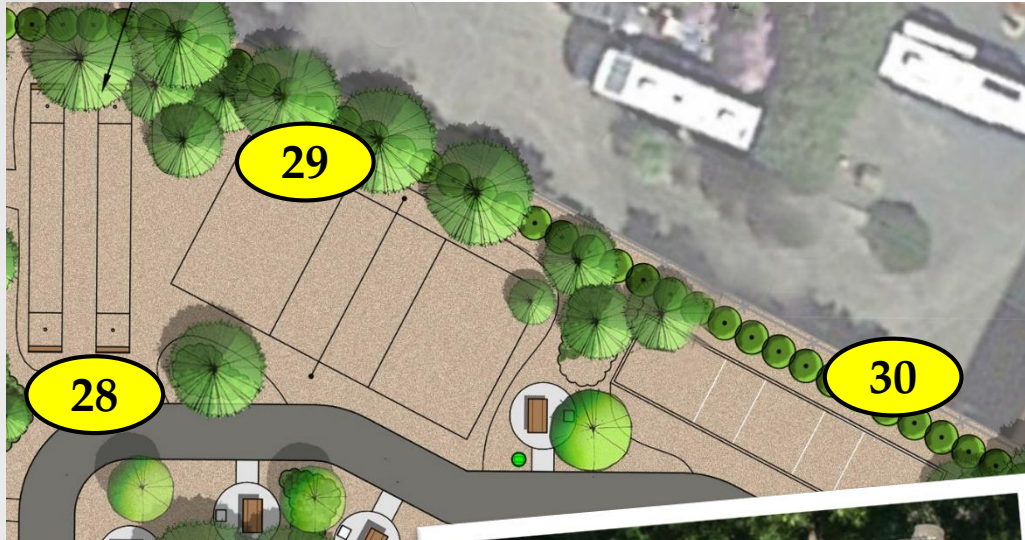
- Design / Materials / Signage / Cameras



Skate & Bike Area

- The CKLC folks approached NVCA on putting a skate area in the park – their annual competitions in Pacific City have been raising money for a skate/bike facility.
- In July 2012 at a Monday evening CAC meeting, NVCA presented the skate area idea to the community. The main room at KCC was filled with about 70 people who wanted to voice their support. We also listened to the concerns of residents regarding such a venue regarding safety, security and noise.
- NVCA recognizes that there is a need for a recreational venue for the pre-teens, teens, young adults and even young families in South County. It is beneficial to our young people's well being.
 - Skate boarding & biking promotes physical development, balance and coordination
 - Skill can be transferred to other sports including surfing, snow boarding, or wakeboarding
 - Provides a place for them to practice skills in a controlled and safe environment
- The park is designed to provide a place for all age groups from toddlers to retirees and the skate and bike area fills a niche for our children's benefit and well being

Recreational Area



Along North Fence and bordering the RV Park several recreational areas are planned

28. Horse Shoes Pits

29. Volleyball Court

30. Bocce Ball Court



Test & Demonstration Gardens



Along the East fence bordering the TLW property.....

27. Sand Dune Plant

Community Demonstration Gardens

Intended to display native beach & dune plants

This area – approximately 8,800 sq feet is the area designated as the revocable license – that is....

Should TLW need the property for future growth this portion would revert back to TLW.

Pacific City Community Park



The Goal – a place for community events, educational opportunities, activities for toddlers, school age kids, pre teens, teens , young families, grandparents and retirees.

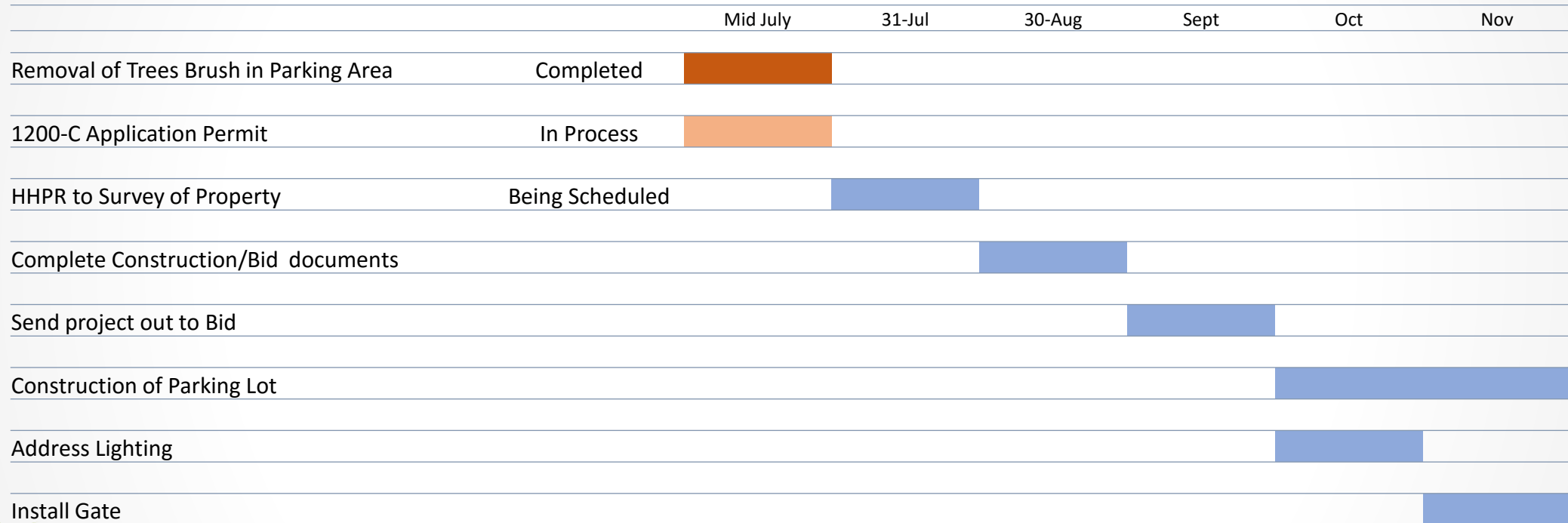
Budget for Pacific City Community Park

| | | | | |
|----------|------------------------------------|-------------------|--------------|---|
| Phase 1 | TLT Grant | \$ 98,000 | 4.9% | Gravel Parking Lot, Power, Some Lighting, Gate |
| Phase 1a | Site Improvements | \$ 335,208 | 16.6% | Paved Parking Lot, Sidewalks, Curbs, Water, Sewer, Other Electrical |
| Phase 2 | Critical Utility Improvements | \$ 161,483 | 8.0% | Restrooms, Drinking Fountains, Trash. Recycling |
| Phase 3 | Community Focused Improvements | \$ 34,102 | 1.7% | Landscaping, Recreation Areas |
| Phase 4 | High Value/Lower Cost Improvements | \$ 110,842 | 5.5% | Picnic Tables, Grills, Benches |
| Phase 5 | High Value/High Cost Improvements | \$ 599,505 | 29.7% | Skate Area, Playground Structures |
| Phase 6 | Interpretive Center | <u>\$ 678,000</u> | <u>33.6%</u> | Interpretive Center |
| | Total | \$ 2,017,140 | 100.0% | |

Prepared by HHPR

Total Cost for Park of \$2.0 million in six+ phases.
TLT Grant is asking \$97,800 or 5% of the Total Cost

TLT Grant Schedule of Work



A Pacific City Park by the People for the Community

Remember how this started

The community had a desire to return an abandoned property to community use.

Well – we got it started - the original committee has made significant progress

Now we need you, the community, to help finish the job and make it a reality.

Help is needed from all, local and regional businesses, full and part-time residents, and anyone who has an interest. Come make a difference and share your skills.

We want to hear from you

Check out our redesigned website

www.nestucca.org

OR

Send as an e-mail at

nvcainfo@gmail.com